



General Bird Removal Tool for Structures

No.1 Bird Removal Tool, Sairen Helps You!

What is Sairen?

Sairen is an eco-friendly Removal Tool that works against birds and wild animals. It is made from natural food additives that are included on the U.S. FDA's Generally Recognized As Safe (GRAS) list. Sairen has an excellent effect on the elimination of harmful birds.

- ✔ Human-friendly and eco-friendly Removal Tool
- ✔ Patented product that has passed testing
- ✔ Customized construction is possible regardless of location
- ✔ Product effectiveness has been verified through many practical construction cases
- ✔ Anyone can install the product simply and easily



Harmful Birds



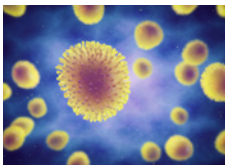
Damage to Buildings

When pigeon droppings containing ammonia and acid solidify and combine with rainwater, they cause a chemical reaction that corrodes iron. As this has been occurring for a long time without proper treatment, it may have affected the structural stability of bridges.



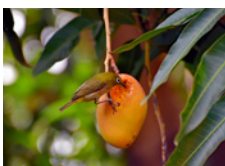
Power Outages

Local residents are worried about the occurrence of power outages due to the fact that birds have been building their nests along the wires of telegraph poles and electrical power substations.



Cause Serious Illness

Bird droppings can cause serious illness in humans, such as meningitis and avian influenza. In extreme cases, these droppings can lead to severe sequelae and death.



Damage to Fruit Farms

Birds cause direct damage to fruit farms such as pear farms and apple orchards.





Bird Removal Tool for Structures



Quality and Functionality

General Bird Removal Tool for Structures

- It is strong against external environmental factors, maintains a stable form and has a continuous function for more than two years.
- It maintain its functional stability even against high temperatures(70°C) and low temperatures(-20°C)
- Even during rain (heavy rain), thanks to its strong viscosity it won't get washed out

How to Install

Sairen can be installed in a way that allows the user to maintain the external aesthetics of the area. By preventing the corrosion of facilities, the service life of facilities can be extended, reducing management costs.

01 Field Survey

Check the number of objects
Determination of How Attached
the Bird is to Its Habitat

- A safe place to raise their hatched chicks
- A place with by-products such as feces or feathers
- Places to stay or rest for a short time

02 Cleaning and Disinfection

Wear basic equipment (masks, protective clothing, hard hats, safety loops, etc.) and sterilize any area that can be a cause of disease.

- Birds form very strong attachments to their habitats, so the area must be kept clean.
- If you do not properly clean the area, the repelling effect may not be as effective.

03 Installation (Applying Sairen)

After removing the lid, attach the product to the steel structure at intervals of 15 to 20 cm. For wooden and concrete structures, silicon should be applied after a certain amount of the product has been sprayed.

- The installation interval can be adjusted in areas with a low frequency of birds.

04 After-Sales Service

A week after the initial installation, visit the installation site again to investigate and reinforce as necessary.

- Areas where birds have nested require attention and observation because birds have regressive instincts to return to their place of birth five to six months after they have left the nest.

05 Perfect Repellence

Installing Sairen will help repel birds while allowing users to maintain the clean external aesthetics of their facilities.

- By preventing the corrosion of facilities, the life of facilities can be extended, reducing management costs.

+ Steel Structures



+ Wooden and Concrete



Field Installation Case

This product is designed to stimulate sight, touch, smell and taste at the same time, resulting in an immediate and lasting repelling effect for birds.

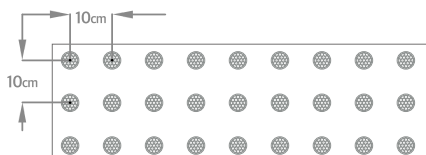


Installation Interval

Adjust the installation interval according to the extent of damage. Vertical installation on structures is unnecessary. (Except Woodpeckers and swallows)

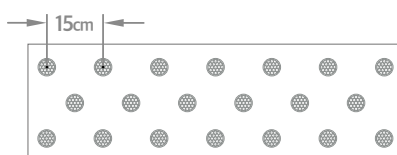
Area with Terrible Damage

Install the product at 10 cm intervals in areas with numerous bird habitats or droppings



Area with Little Damage

Install the product at 15 cm intervals in areas without bird habitats or droppings



Area with No Current Damage, But Expected in the Future

Install the product at 20 cm intervals in areas without any trace of bird habitats or droppings, yet it is an area where future damage is expected

